

## Product Data Sheet for 7285

### Product Information

<b>Product Long Code</b>	07285010
<b>Customer Facing Code</b>	7285
<b>Description</b>	WYPALL* L20 Wipers - Small Roll / Blue
<b>PDS Reference</b>	04/09/2015



### Packaging Configuration

<b>Case Contents</b>	24 Rolls x 115 Sheets = 2760 Sheets
<b>Outer Pack Material</b>	Paper
<b>Commodity Code</b>	48189090



Dimension		
46.00	x	24.00
		Length x Width(cm)

### Product Description

A limited life wiper using AIRFLEX\* base sheet technology, layered fabric that's strong, thick and highly absorbent so it cleans up fast without falling apart, does the job with fewer wipers and helps reduce costs

Ideal for: light, precise wiping-up of spills, grime, dust; polishing glass and smooth surfaces; cleaning and drying tools and hands; finally assembly wiping; wiping food preparation areas.

Available as: small perforated rolls in white or blue for use in busy areas.

### Bullet Point

- AIRFLEX\* highly absorbent' Competitive cost in use
- WYPALL\* L20 Wipers Versatile

### Product Specifications

<b>Roll Type</b>	Small roll	<b>Core Size (cm)</b>	4
<b>Plies</b>	1	<b>Perforated</b>	Yes
<b>Bar Code (Case)</b>	05027375018206	<b>Recycled Fibre(%)</b>	100
<b>Virgin Fibre(%)</b>	0	<b>Bleaching Method</b>	Elemental Chlorine Free
<b>Embossing/textured</b>	Yes	<b>Technology</b>	Uncreped Through Air Dried (UCTAD)
<b>Colour</b>	Blue		

# Product Data Sheet for 7285

## International Standards and Symbols

### Solution



#### Safer Workplace

We know staff safety is your top priority. You can rely on our solutions to protect them, their environment and your important work.



#### Productive Workplace

The success of your business hinges on your work efficiency. That's why our solutions are designed to help improve your productivity.

### Standard R+E



#### Food Contact Regulations

BFR 36th Recommendation -DE  
CH,Food Contact Law-  
DE,NL,IT,FR,Lebensmittel- und  
Futtermittelgesetzbuch - LFGB

### Trade



#### ISO 14001

ISO 14001 is an international environmental standard. Designed to help organisations ensure that operations comply with environmental laws, and; major environmental risks and liabilities are properly identified, minimised and managed.



#### ISO 9001

This gives the requirements for quality management systems, is now firmly established as the globally implemented standard for providing assurance about the ability to satisfy quality requirements and to enhance customer satisfaction in supplier-customer relationships.

### Packaging

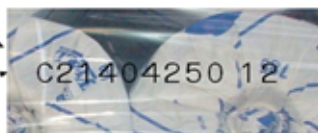
<b>Unit Of Sale</b>	Case	<b>Net Weight(kg)</b>	10.5
<b>Max Weight(kg)</b>	12.14	<b>Case Dimension (LXWXH)(cm)</b>	47 x 36.5 x 48.5
<b>Inner Pack Material</b>	Paper		

Pallet Type	LxWxH (m)	Cases per Layer	Layers per Pallet	Cases per Pallet
A2	1.20 x 1.00 x 1.12	6	2	12

### Related Products

Product Code	Description	Recommendation
	Fits Dispenser	
7041	KIMBERLY-CLARK PROFESSIONAL* Rolled Hand Towel Dispenser - White /25 cm	✓

### Batch Code



## Information

It is the employer's responsibility to assess the risk of the task to be undertaken and determine the correct choice of wipers for the task. The manufacturer, Kimberly-Clark, does not accept any responsibility for the incorrect choice or misuse of wipers shown in this brochure. All care has been taken to ensure that the information contained herein is as accurate as possible at the time of publication, however errors may occur and legislation concerning personal protective equipment is under constant review and may change in the lifetime of this brochure. Accordingly, the specifications for the products may be subject to change. We would advise you to contact INFOFAX if you have any queries concerning the products shown or the suitability of such products for the particular task. Always dispose of used protective equipment in a safe and appropriate manner in accordance with European, National and Local environmental regulations

<b>Infifax Details</b>	infifax@kcc.com	<b>Websites</b>	www.kcprofessional.co.uk
<b>Customer Service Number</b>	For more information please contact Customer Service during regular office hours-0870 551 044		
<b>Country of Origin</b>	UNITED KINGDOM		